





BACK.
AND
BEYOND.



DIRECTOR'S MESSAGE

Dear members, friends and supporters.

Thank you, all, for being an essential part of OLLI @Berkeley's learning community.

Whether you opened the door at Freight and Salvage in downtown Berkeley for a film, music, or history course, or clicked your mouse or tapped your tablet to participate in nearly one hundred groundbreaking courses and events online, you contributed to a stellar year of insight, exchange and learning.



If you answered our call to join a UC research project, you added important perspectives to a growing body of knowledge of how the university can embrace the older learner while strengthening its research mission to investigate the lifespan. In this arena, young and old are encountering their future selves and the wisdom of elders.

The success of this year was determined by our collective ability

to adapt, to be flexible and resilient, and to take on the hard work of navigating Zoom technology to increase accessibility so that everyone could continue to learn safely.

We offered the university and members an opportunity to discuss some of the most pressing issues of the day. We contributed to the campus efforts to enfranchise alumni to bring them into the learning environment of campus and to remind them of the thrill of having a great rhetorical exchange or make a new friend.

A substantial number of the us have been together since OLLI @Berkeley's founding 15 years ago. Our loyalty and commitment to one other and to the importance of learning, always, whatever the challenges, has proven our ingenuity as well as our stick-to-itiveness.

This year has also brought a great deal of reflection about how we, as individuals and as a community of learners, want to experience the future. How do we wish to engage and connect? How do we best celebrate the joys of lifelong learning with one another? These past few years have shaken all of us deeply and transformed the very essence of what it means to be together. All of us are doing the hard work of reorienting and recapturing what matters most. It's a time of great discovery, and one I'm excited to explore with you in the coming months.

Once again, thank you for making this all possible with your engagement and contributions.

Susan Hoffman

Susan Hoffman
Director, OLLI @Berkeley

BY THE NUMBERS

2,441

MEMBERS

2,799 in 2020-21

73

COURSES

63 in 2020-21

262

MEMBER CITIES

233 in 2020-21

96%

SATISFIED

According to annual survey

79,923

WEBSITE VISITORS

58,212 in 2020-21

26

SPEAKER EVENTS &
TOWN HALLS

\$100,064

DONATIONS

from generous members, friends and supporters



LEARNING



LEARNING

In 2021-22, we realized the hybrid future we had laid out in our strategic plan years earlier. We were thrilled to welcome back members — vaccinated, boosted, masked — to engage and connect with us and with one another in person while we continued to grow a robust online program.



In the Classroom

In 2021-22, we curated a roster of 73 courses that contextualized and illuminated the tumult and wonder of the world around us.



Our members dove into explorations of racism and European art, caught their breaths exploring sacred mountains around the world, sang joyfully with the Beatles and the Stones, grappled with ethical dilemmas. They probed Russia, cultural astronomy, film scores, the Kennedys. Every topic brought to life by Cal faculty and other distinguished scholars.

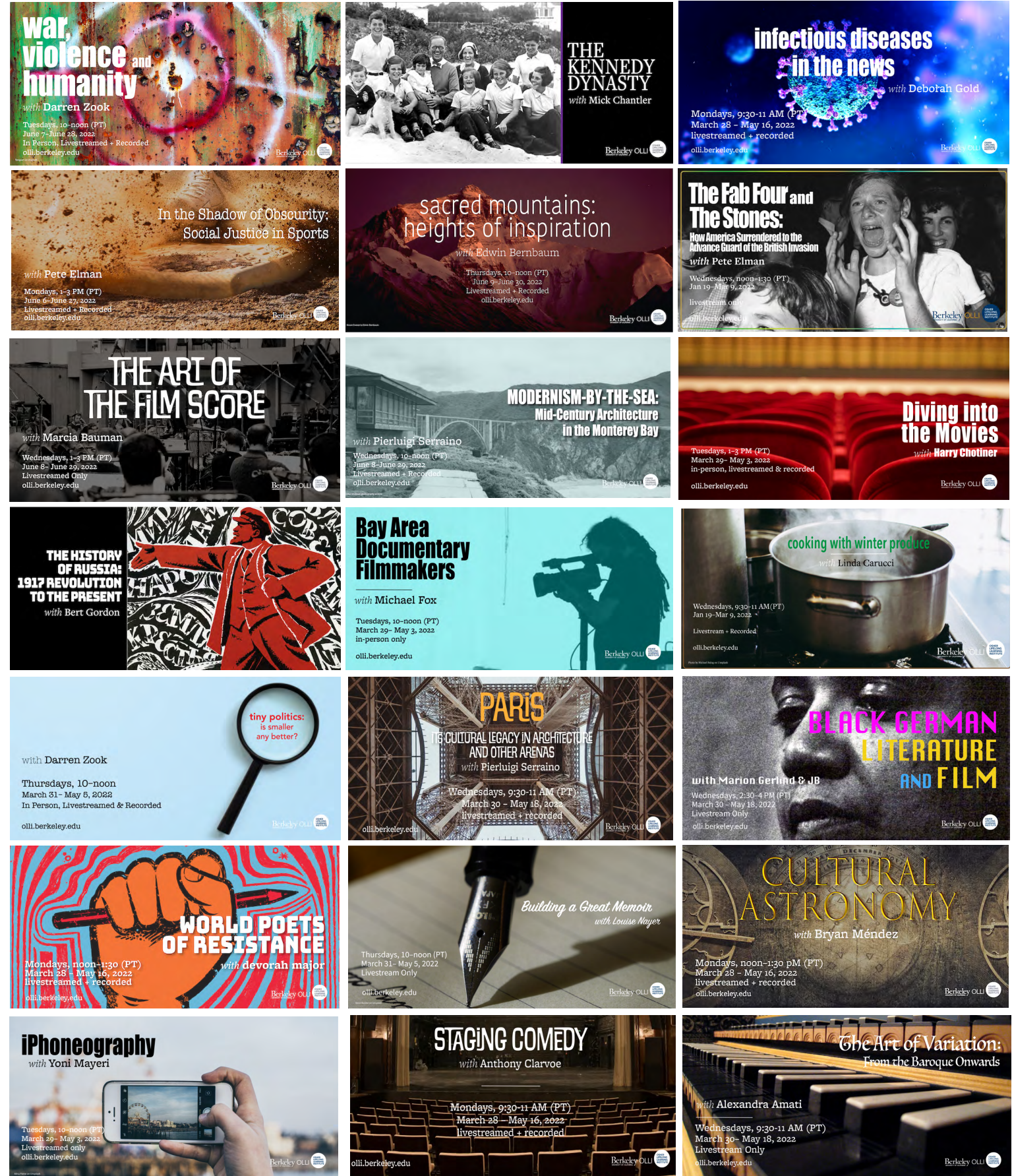


Every Way for Everyone

After months of planning and hoping, we were overjoyed to welcome members back to in-person classes at Freight & Salvage in downtown Berkeley and at the OLLI office just blocks away.



We also continued to offer the majority of our courses online — streamed live, and, in many instances, also recorded — to ensure we continue to deliver dynamic and convenient learning experiences for all of our members, near and far.



LEARNING

Speaker Events & Town Halls

From Berkeley Law School dean **Erwin Chemerinsky** discussing how the U.S. Supreme Court empowers police, to a panel examining the contentious ownership of truth, our speaker series and Town Hall gatherings offered members and the community opportunities to wrestle with some of the most critical issues of our time.

We dedicated the fall of 2021 to exploring different facets of the climate crisis, featuring figures at the forefront of their fields in research and policy, including **Daniel Kammen**, **Ken Alex** and **John Battles**.

We also continued our *America's Unfinished Work* series which presents influential voices engaged in the examination and eradication of systemic racism to create a more humane, just and equal society. Speakers included **Zach Norris** of the Ella Baker Center for Human Rights and **Emerson Sykes** of the ACLU.

Dr. Deborah Gold, a retired infectious disease specialist, continued to provide our members with her invaluable expertise on the current state of the pandemic in four Q&A sessions.

Berkeley Talks

Over the years, many of our speaker events have been featured on *Berkeley Talks*, a *Berkeley News* podcast, that showcases important discussions and conversations taking place on campus. Six of our gatherings — each of which attracted hundreds registrants — were spotlighted in 2021-22, including presentations by **Robert Full**, professor of integrative biology, UC Berkeley, on bioinspired design; **Abdi Soltani**, executive director of the ACLU of Northern California, on voter suppression; **Erica Bree Rosenblum**, professor of global change biology, UC Berkeley, on finding hope for biodiversity; **George Breslauer**, a professor emeritus, UC Berkeley, and **Yuriy Gorodnichenko**, professor of economics, UC Berkeley, on Russia's invasion of Ukraine; and **Linda Rugg**, Associate Vice Chancellor for Research, on Native American repatriation at Berkeley.

THE CLEAN ENERGY TRANSITION AND COP26
with **Daniel Kammen**
James and Katherine Lau Distinguished Chair in Sustainability at UC Berkeley, with appointments in the Energy and Resources Group, Chair, the Goldman School of Public Policy, and the Department of Nuclear Engineering. Served as Science Envoy in the Obama-Biden State Department.
Friday, Oct 1, 2021
10:30-11:30 AM (PT)
Online. Open to all. Register at olli.berkeley.edu

COVID: Your Questions Answered
with **Deborah Gold, M.D.**
Friday, Oct 1, 2021
9-10 AM (PT)
Online. Register at olli.berkeley.edu
OLLI members & campus colleagues welcome!

Technology Innovations for Older Adults
Unexpected Consequences of the Pandemic
with **David Lindeman**
Director of the CTRBS Health Initiative, Director of the Center for Technology and Aging, and Co-Director of the Center for Innovation and Technology in Public Health, UC Berkeley
Friday, Nov 5, 2021
10:30-11:30 AM (PT)
Online. Register at olli.berkeley.edu
OLLI members & campus colleagues welcome!

DEFUND FEAR: SAFETY WITHOUT POLICING, PRISONS AND PUNISHMENT
with **Zach Norris**
Executive Director, Ella Baker Center for Human Rights
Friday, Feb 4, 2022
10:30-11:30 AM (PT)
Online. Open to all. Register at olli.berkeley.edu

THE HARD PART: TURNING CLIMATE SOLUTIONS INTO POLICY AT SCALE
with **Ken Alex**
Director of Project Climate at UC Berkeley's Center for Law, Energy, & Environment. Served as senior policy advisor to former CA Governor Jerry Brown.
Friday, Oct 29, 2021
10:30-11:30 AM (PT)
Online. Open to all. Register at olli.berkeley.edu

Finding Hope (for Biodiversity Conservation) in an Era of Rapid Global Change
with **Erica Bree Rosenblum**
Professor of Global Change Biology at UC Berkeley
Friday, Oct 8, 2021
10:30-11:30 AM (PT)
Online. Open to all. Register at olli.berkeley.edu

UNDERSTANDING WILDFIRE AND ITS IMPACT IN CALIFORNIA
with **John Battles**
Professor of Forest Ecology, Department of Environmental Science, Policy & Management at UC Berkeley
Friday, Oct 22, 2021
10:30-11:30 AM (PT)
Online. Open to all. Register at olli.berkeley.edu

Caring for Ourselves
The Science of Emotional Resilience
with **Amy Eva**
Associate Educational Director at the Greater Good Science Center at UC Berkeley
Tuesday, Aug 24, 2021
2-3 PM (PT)
Online. Open to all. Register at olli.berkeley.edu

BANS ON INCLUSIVE EDUCATION AND HOW TO FIGHT THEM: A FIRST AMENDMENT LITIGATOR'S PERSPECTIVE
with **Emerson Sykes**
Attorney, ACLU Speech, Privacy, and Technology Project
Friday, Feb 25, 2022
10:30-11:30 AM (PT)
Online. Free and open to all. Register at olli.berkeley.edu

Beaten Down, Worked Up: The Past, Present and Future of American Labor
with **Steven Greenhouse**
Friday, April 29, 2022
10:30-11:30 AM (PT)
Online. Free and open to all. Register at olli.berkeley.edu



RESEARCH

— Identify community leaders
and activists

Leaders & activists create
gathering to disseminate
pre & post fire actions.

Task individuals to

Create evacuation - humans & animals
insurance
financial support resources
apply claim for water, food
temporary shelter opportunities



RESEARCH

National Science Foundation Grant

We continued work on the **National Science Foundation Grant from the NSF Program Advancing Informal STEM Learning (AISL)**. The research focus and title is *“Investigating the Measurement of STEM Engagement and Advocacy in Older Adults.”*

Initially awarded in the fall of 2019 as an 18-month-long grant to develop and validate outcome metrics used in informal older adult learning, the study period was extended due to the necessity to test the measures in an in-person learning experience, which was not possible during the height of the pandemic.

Following cognitive labs and pilot surveys for the measures, we held design workshops in the fall of 2021 and the spring of 2022 with our study partners — the **Fung Fellowship** and the **Lawrence Hall of Science** — in which OLLI members and Berkeley undergraduates came together to learn and apply design principles to real-life situations. The workshops were an in-person vehicle in which to test the study measures.

The research study is now planned to conclude by December 2022 following the final Advisory Board meeting and the production of the final report



UCB Discovery Initiative

In the spring of 2022, we submitted a proposal to **Berkeley’s Discovery Initiative**, a multi-year campus-wide effort to transform undergraduate education through the elevation of immersive, engaged and inquiry-driving learning. Discovery also provides advice and mentoring to help increase self-actualization, the process by which an individual reaches his/her full potential.

We proposed developing and offering a course *Coaching for Self-Actualization* with the goals of helping students increase their personal agency, self-efficacy and resistance. We would do so by training older adults to provide individualized coaching services to help students address current academic and life challenges, and to provide a framework of empowerment they can draw on in the future.

Our proposal was accepted and funded in spring 2022. We immediately set to work recruiting OLLI members, and, in a collaborative outreach

with the Retirement Center, retired faculty and staff.

Launched in fall 2022, the course is a pilot and will undergo extensive evaluation to determine the possibility of scaling it for the 2023-24 academic year.

Collaborative Research Partnerships

We continued to support academic research conducted by campus and other UC partners by assisting with study recruitment when the research focuses on older adults.

Studies included:

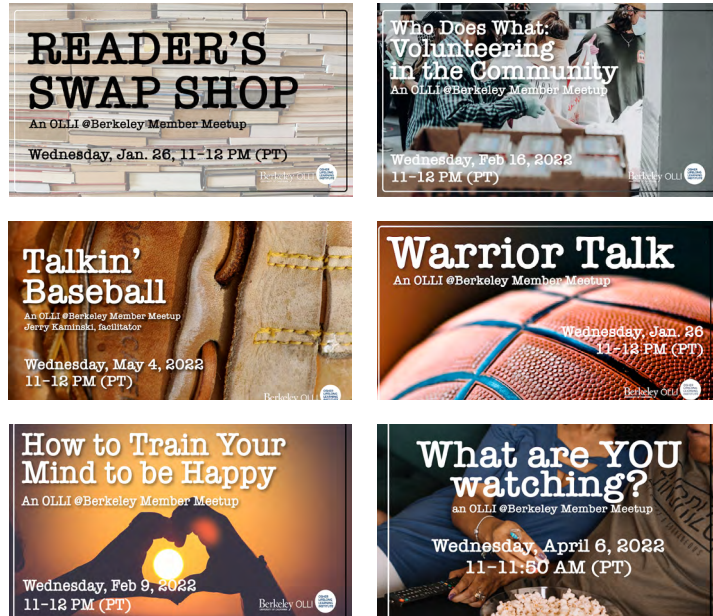
- Moving Together (UCSF)
- Dr. George Brooks Metabolic Flexibility (UCB)
- Public Health Online Fitness (UCB)
- Impact of Online Learning (UCR and UCI)





COMMUNITY

Community



Member Meetups

Our Member Meetup program was launched in the fall of 2021 as a way to bring members together to explore shared interests, meet new people and find community over an array of lively topics. Members have gathered virtually to share book recommendations, learn the in's and out's of buying electric cars, talk sports, and more. Meetups are proposed and led by members, and have been a popular addition to our programming.

Alumni Outreach

In 2021-22, we continued to grow and nurture our connection and commitment to the Berkeley alumni community through a number of outreach endeavors.

In the winter of 2022, we worked in partnership with the Alumni Development and Engagement office to offer one of our most popular courses — Extreme Politics with professor Darren Zook — at no cost to 1,500 alumni who also enjoyed the opportunity to join him in two lively livestreamed conversations.

We also connected regularly (and digitally) with tens of thousands of alumni through the Chancellor's emails, Berkeley Online emails, affinity group newsletters, and direct OLLI email communications.



New Team Members

In December 2021, **Patricia Carvalho** joined us as our new Business and Operations Manager. Patricia arrived after a decade as Operations Director at Ashby Village, a non-profit organization serving elders in the East Bay.



In the fall of 2021, **Sandra Bass**, Executive Director & Associate Dean of the Public Service Center at UC Berkeley, assumed a vital role as our Diversity, Equity, Inclusion and Belonging advisor.



A Visit with Barbro Osher

We were delighted to welcome **Barbro Osher** to the OLLI offices in April of 2022 to provide a day-long opportunity to connect with campus friends and colleagues, including **Robert Strand**, director of Berkeley's new Nordic Center. Osher, Swedish Consul General in San Francisco and chair of the Bernard Osher Foundation and Barbro Osher Pro Suecia Foundation, was kind enough to introduce Strand in his OLLI talk, "Is the American Dream a Nordic Reality?" (Hint: Yes.)



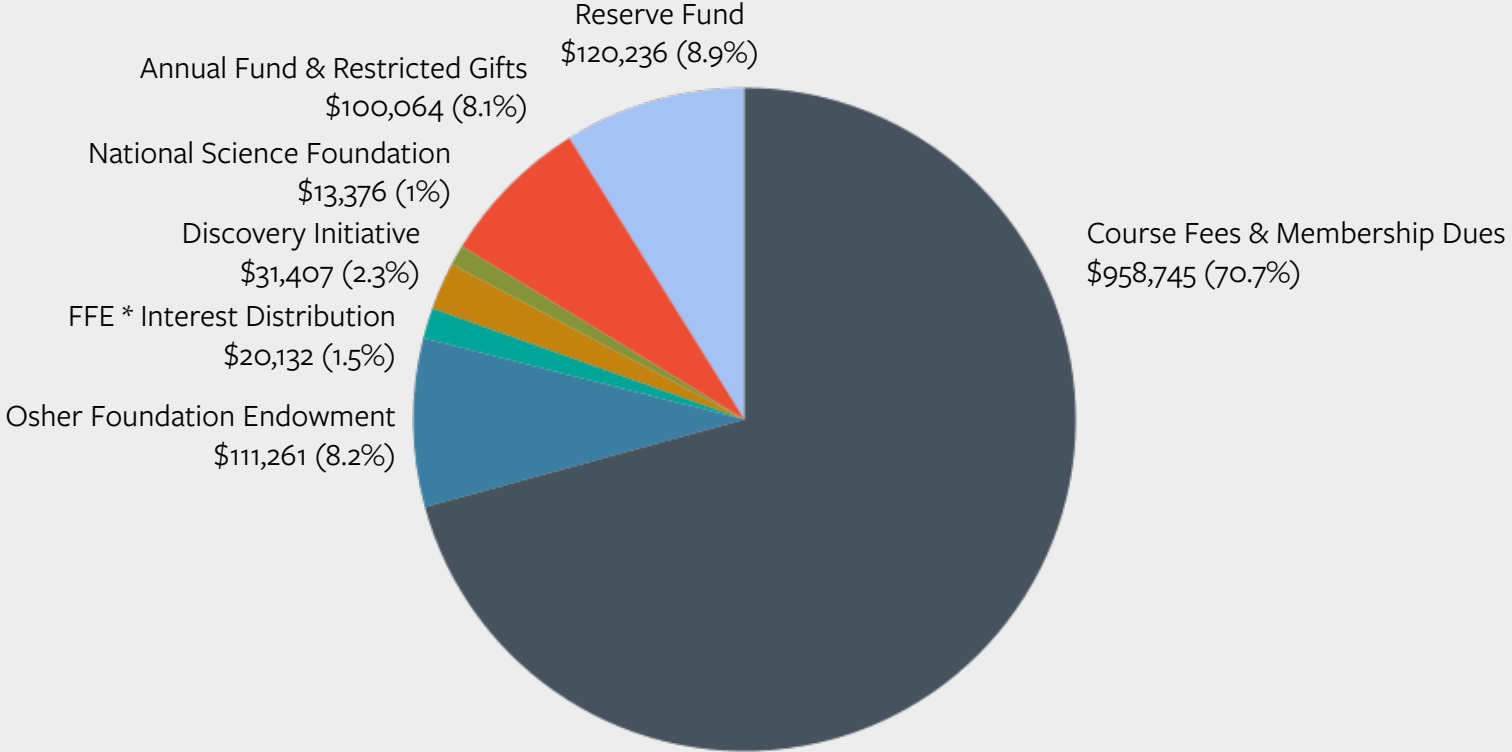
A Space to Share and Learn

Founded in 2021 by longtime member and instructor **Sara Orem**, the Vital Aging group brings members together in community to discuss and reflect on issues of particular significance to older adults. Senior housing options, sleep, and solo aging, are just some of the many topics explored over the past few years.

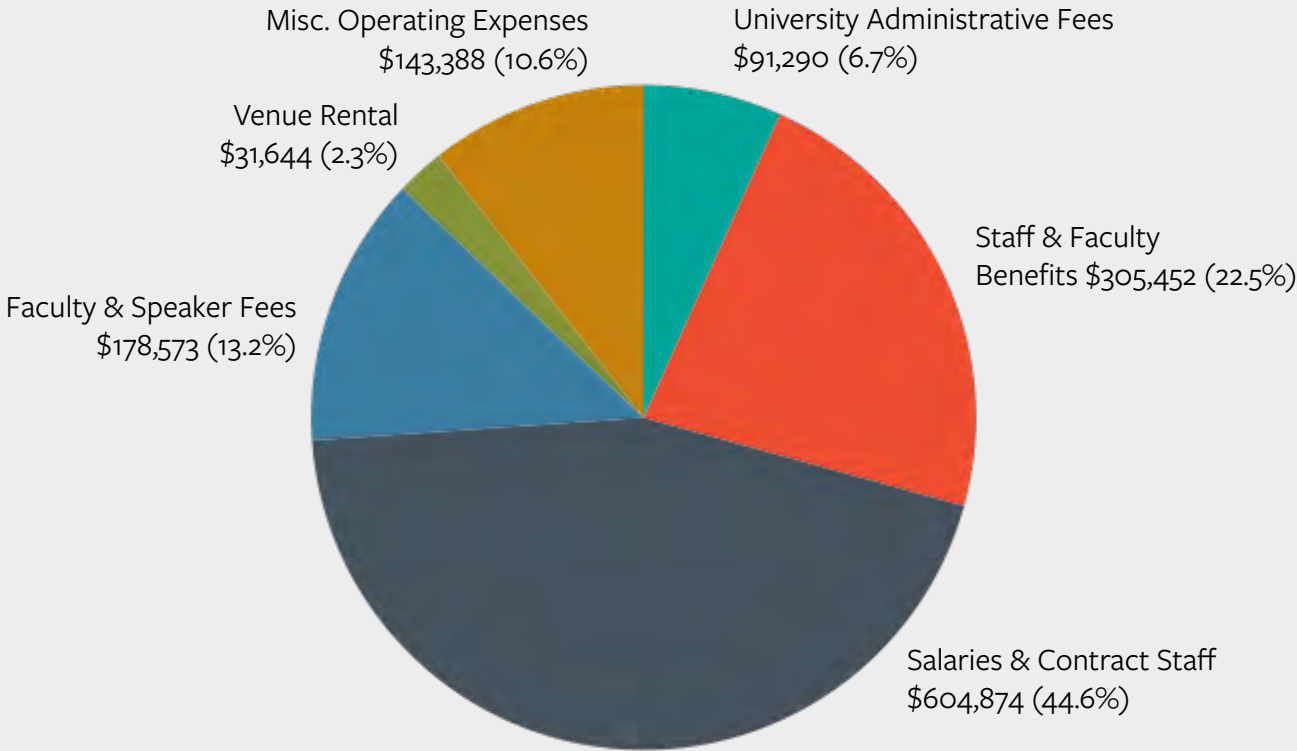


FISCAL YEAR OVERVIEW

REVENUE
\$1,355,221



EXPENSES
\$1,355,221



New Administrative Home

In July 2021, OLLI’s university home (Summer Sessions, Study Abroad and Lifelong Learning) added a new unit — UC Berkeley Extension. We are now in the division known as SSALLEx headed by the Dean of Extended Education, **Richard (Rick) Russo**. With our new colleagues, we have been learning about the other departments and contributing to a common vision known within the division as One Berkeley.

Operating Budget

2021-2022 was both exhilarating and challenging. We plan our academic terms months in advance, and, like many, had envisioned a collective re-emergence made possible by the arrival of highly effective vaccines. However, new COVID variants and the understandable hesitancy of many members to gather in person again while simultaneously experiencing “Zoom fatigue”, frustrated our efforts to fully resume face-to-face learning and resulted in a 4.8% loss in membership dues and course fees.

Our commitment to rebuild our community by offering more courses — both online and in person — significantly increased our spending on faculty. Likewise, the resumption of venue costs, an initial investment toward the development of a new website, and equity raises for a number of staff resulted in an unusual operational deficit. We were able to cover this by drawing from reserves, which allowed us to continue offering quality programs and courses with the expectation that enrollment will recover over time.

Reserve Fund

Each year, the University requires us to bring in more money than we spend with excess dollars going into a reserve for precisely the kind of fiscal situation we faced.

Fortunately, our reserve fund had accumulated over the past four years to a sum of \$225,000. This reserve allowed us to cover the operational deficit of \$120,236 for the 2021-22 academic year and to start 2022-23 with a reserve fund of roughly \$105,000.

Back in 2017, the University offered OLLI the opportunity to establish a **Fund Functioning as an Endowment (FFE)** when our reserves had grown to \$399,000 over our first ten years. Such funds generate interest income and are a valued source of annual funding, but the minimum qualifying fund is \$500,000. Thanks to generous gifts from key major OLLI donors, we were able to establish the FFE in the fall of 2017. Since its founding, the FFE has generated roughly \$20,000 per year of interest income, which has been used to support our programs. Per an agreement with the university, the FFE principal could not be drawn down for the first five years — the fall of 2022, at the earliest.

* FFE = Fund Functioning as an Endowment

LANDISE

RESTRO

FRIENDS OF THE FREIGHT

Enjoy the Perks of Being a F
ACCESS & DISCOU

Advance Ticket Sales | Reservat
Tickets | Class

TRADITION MUSIC RIVING

Join today at a freigh

FREIGHT

GRATITUDE

DONORS

We gratefully acknowledge the many members and friends who generously supported our annual fund between July 1, 2021 and June 30, 2022. Because of their belief in the work we do — and their desire to help us navigate through and beyond these difficult times — we raised \$100,064.

Dean's Circle

Gifts of \$1,000 and above

Anonymous
Harry W. Chotiner & Carolyn P. Blum
Edith Gladstone B.A. '61, M.A. '66
Howard M. Goodman & Deborah S. Goodman
Terri D. Hearsh B.A. '69, M.A. '70, M.B.A. '80
Richard J. Hornberger B.A. '75 & Cheryl Hornberger
Christina J. Janssen P '11 & Howard A. Janssen P '11
M. Brian Murphy M.A. '68, Ph.D. '76 & Susan E. Hoffman
Michael Maidenberg & Katherine Maidenberg
Barbara Malina & Scott Wachter
Marjorie Medress & Mark Medress
Jane Neilson B.A. '67 & William Neilson
Sara Orem & Murray Schlusel
Ellen J. Pelissero
Diane K. Plank M.B.A. '83
Deborah J. Reiling B.A. '78, M.L.S. '80
Eileen S. Savel B.A. '78 & Jerome J. Savel
George A. Spaeth & Nancy D. Spaeth Cred/Cert '78, Ed.D. '88
Wendy W. Willrich & Mason Willrich J.D. '60, P '86

Gifts of \$250 – \$999

Judith Ball
Margaret Barbee
Susan R. Baskin B.A. '65 & Barry R. Baskin B.A. '64
Mari E. Campbell & Gary R. Campbell
John P. Chalik III J.D. '70 & Susan W. Chamberlain
Amy T. Chung B.A. '75
Donna M. Dell'Era B.A. '76 & Patrick L. Dell'Era
Thomas J. Francis B.S. '73 & Sharon R. Francis
Martin Diamond
Sue J. Estey B.A. '68
Michael H. Fajans M.C.P. '70 & Merle W. Fajans
Donald M. Freed & Dava H. Freed M.P.H. '80
Kate E. Funk & Daniel C. Funk
Edward Flaherty
Paul D. Hennessey M.B.A. '82 & Susan Dague
Karen M. Hsu M.L.S. '66
Wallace Jones & Judith Jones
Phyllis Coghlan Josi B.A. '70, P '19
Geraldine M. Kaminski & Gerald F. Kaminski
Nancy M. Koenig
Ellen Drapkin Kolowich B.A. '71
Karen J. McLennan
Gregory V. Nelson Ph.D. '68 & Karen L. Nelson M.S. '67

Marsha Novick
Margaret B. Nye
Ann Peden
Linda A. Perkins
Lucille Block Poskanzer M.S. '76
Laura E. Schlichtmann B.A. '71, J.D. '93, P '07
Valerie E. Sopher B.A. '74
Gail I. Splaver M.P.H. '80, D.S.W. '84
Romer A. Stevenson B.A. '64
Lesley Tannahill B.A. '66
Diane A. Tokugawa B.A. '77, M.P.H. '78 & Alan D. Gould B.A. '71
Elsa H. Tranter & Revan A. Tranter
Mary Anne L. Winig P '02 & Hugh R. Winig P '02
Phillip L. Zimmerman & Kathryn J. Zimmerman

Gifts up to \$249

Simone Adair
David P. Adams
Carole Cardoza Allen
James Asher Morgenstern & Linda Dow
Mary L. Asturias
Alton G. Avilla
Suzanne J. Awalt D.S.W. '82 & Roy W. Awalt
Gary E. Bacher B.S. '65 & Carole Anne Bacher
Edward A. Bayer
Edwin M. Bernbaum M.A. '80, Ph.D. '85 & Diane L. Bernbaum
Mary C. Bevc
Newton R. Fong B.A. '77, M.S. '78 & Patricia T. Bortman P '01 & Lillian F. Braudy
Bob Brewer
Marcia L. Brockbank & Norman Brockbank

Francesca Pereira Cervantes B.A. '81, M.C.P. '86 & James R. Cervantes
Michael L. Chantler
Miriam Ciochon M.A. '64
Rose Ann Cochran
Joseph Curley
Linda Day
Ms. Lynn Deason
Linda S. Delehunt B.A. '70, Cred/Cert '71, P '00, '01 & Michael E. Delehunt P '00, '01
Sanford F. DeLugach B.S. '68 & Leslie R. Delugach B.A. '72
Kathleen D. Demerdjian
Barbara B. Dickey
Elizabeth Greene
Beth Feingold
Marsha D. Felton P '91
Marcia Flannery
Debra Thal
Doug Findlay & Sharon Findlay
Gail E. Finney Ph.D. '80
Madeline Fleischmann
Newton R. Fong B.A. '77, M.S. '78
Twila L. Foster B.A. '77 & Steve P. Pezzola B.S. '78, J.D. '81
Susan Fox
Dagmar Benioff Friedman B.A. '53, M.S.W. '55
John P. Gallagher & Susanne Gallagher
Mary Gerber & Liz Rottger
Ellen Gilman
Crissi Goldman B.A. '86 & Jerrald Goldman
Geoffrey D. Gosling M.S. '75, Ph.D. '79 & Katie Korzun
Margery Hazelton
Thomas F. Herman M.B.A. '69 & Bonnie R. Herman
Cheryl D. Hess M.B.A. '79

DONORS

Gifts up to \$249

June C. Hunt
Joel L. Jackson & Glenn R. Jackson
Loisann Jacovitz M.P.H. '76
Nancy E. McKee-Jolda B.A. '70 & Robert E. Jolda
Claire M. Khouri B.A. '75 & John Khouri
Aileen Kim B.A. '80 & Dave Coker
Deborah Kirshman P '11 & David K. Kirshman P '11
Barbara Kloehn
Regina Eis Lackner B.A. '66, Ph.D. '83 & Heinz Lackner
Nancy B. Larsen
Gregory R. Larson M.A. '82, Ph.D. '87 & Deborah L. Larson
Susan G. Laughlin D.S.W. '78 & Lowell W. Cooper
Kenneth A. Frankel M.A. '75, Ph.D. '79 & Deborah Lichtman M.A. '78, Ph.D. '90
Carl T. Lieberman B.A. '70
Hugh D. Livingston
Stella J. Livingston
Eugenia A. Loken P '97
Stephanie Long
Donna Rosenthal Lurie B.A. '69, C.Esing '70 & Joseph Lurie
Jacquelyn Marie B.A. '76, M.L.S. '78
Suzanne Masuret C.Mult. '65
Steven M. Mathews M.C.P. '75
Charlotte McCaffrey
Suzanne Ryan McLean B.A. '65, P '92 & William J. McLean B.S. '63, M.S. '65, Ph.D. '71, P '92
Ellen Meltzer & George Porter

Anita Mermel
Selma S. Meyerowitz B.A. '68, M.A. '70 & Malcolm Trifon
Amy E. Millar
Rima Miller
Annette Mora
Reynold Pritikin & Judith D. Moran
Linda B. Lee
Christopher M. Lutz B.S. '86 & Margaret M. O'Halloran M.B.A. '88, M.P.H. '88
Robin Dunn Olivier B.A. '65
Janet Coates Ostler B.A. '81, M.A. '84, M.B.A. '89 & Clyde W. Ostler P '97
Peggy Poole
Joseph D. Pehl
Karin E. Peterson B.A. '70 & Dennis D. Clark
Armando E. Picciotto B.A. '65 & Carol E. Picciotto B.A. '62, C.Esing '65
Craig E. Janke B.A. '73 & Deborah Price-Janke
Jane M. Purinton
Karen E. Purtich B.A. '72
Florence B. Raskin M.P.H. '82, M.B.A. '83 & Paul A. Raskin
Vivian L. Ricci
Stephen L. Rice B.S. '64, M.S. '69, Ph.D. '72
Adrienne M. Riley
Rebecca A. Said B.A. '75
Rogelio C. Salcido M.A. '78
Martha M. Salzman & Jay Aleck
Allyn Saroyan

Carole R. Schloz
Harvey Schwartz & Marilyn Schwartz
Mike F. Sentovich P '85, '87 & Barbara B. Sentovich
Patricia C. Sheehan B.A. '71, P '10 & Peter E. Sheehan J.D. '71, P '10
Joy K. Shiohita B.A. '94
Lucy Bartholomew Smallsreed M.P.H. '78 & Timothy Smallsreed
David K. Smith
Linda Snyder
Thomas H. Sponsler P '97 & Lucy A. Sponsler P '97
Patricia N. Sullivan Ph.D. '96 & Michael G. Sullivan
Michele D. Sutton-Riggs B.A. '88 & Gregory M. Riggs
Martha S. Swartz
Susan T. Taylor J.D. '83
Betty K. Smith & Kent L. McDonald Ph.D. '72
Cathryn Thurow
Stephen L. Tobias
Helene Wolff Vilett B.Arch. '62 & John E. Vilett B.Arch. '62
Judith B. Weiss B.A. '79 & Stuart Swiedler
Nancy Wen B.A. '10
Susan Wester
Constance Williams
Linda C. Wing C.Esing '71, Ph.D. '89
Patricia A. Wool M.A. '77, C.EAS '86, C.EASP '90, Ed.D. '94, P '02
Margaret Fuller Wooster B.A. '66
Linda Martin Wroth M.L.S. '67
Barbara W. Yoder B.A. '66, M.A. '67 & Richard L. Yoder
Alice I. Youmans
Steven R. Zatkan B.A. '67, M.A. '69 & Victoria Bleiberg Zatkan B.A. '75
John E. Zimmermann & Diana G. Graham

Planned Giving

IRA rollover gifts and other planned gifts are an excellent way to make a meaningful contribution to a program you love and to help sustain our community of lifelong learners for many years to come.

Visit planyourlegacy.berkeley.edu for helpful tips on making your gift, or contact the Office of Gift Planning at 800.200.0575 or ogp@berkeley.edu.

Campus Contributors

Several of our most committed donors have also made significant contributions to the campus community including transformative gifts to Berkeley's Fiat Lux program and to the Center for Climate, Law and the Environment at Berkeley Law. On behalf of UC Berkeley, thank you to **Wendy & Mason Willrich, Jake Warner & Toni Ihara, and Marjorie & Mark Medress** for your support of the Cal's extraordinary students and programs.

COMMITTEES

We are grateful to the member volunteers who served on committees in 2021-22, providing us with their invaluable support and counsel.

Advisory Research Team

Research Associate: **Cheryl Brewster**

Members: **Lorraine Midanik, Sara Orem, David Presti, Peter Ralston**
Staff: **Susan Hoffman**

The team identifies UC-based research opportunities for member participation, conducts inquiry projects, and explores ideas and issues to inform the curriculum or membership.

Curriculum Committee

Co-chairs: **Susan Chamberlain & Ann Peden**

Members: **Amy Chung, Bill Neilson, Lucille Poskanzer, Linda Wing, Hugh Winig**
Staff: **Susan Hoffman & Matt Shears**

The Curriculum Committee reviews course proposals, meets with prospective faculty and advises on the curation of future academic terms.

Development Committee

Co-chairs: **Mark Medress & Wendy Willrich**

Members: **Gerry Kaminski, Mike Maidenberg, Eileen Savel, Murray Schlusel**
Staff: **Susan Hoffman & Nancy Murr**

Development Committee sets fundraising goals and plans the annual fund campaign.

Lafayette Planning Committee

Co-chairs: **Judy Kirkpatrick & Nikki Maziasz**

Members: **Marty Aufhauser, John Daws, Tom Francis, Christina Janssen, Howard Janssen, Kathy Merchant, Hugh Winig**
Staff: **Susan Hoffman & Matt Shears**

The Lafayette Planning Committee provides important insights and outreach into Lafayette and neighboring communities.

Member Services Committee

Co-chairs: **Joan Greer & Jerry Kaminski**

Members: **Hugh Livingston, Stella Livingston, Valerie Knepper, Nikki Maziasz, Susan Sperber**
Staff: **Nancy Murr**

The Member Services Committee works to build a strong sense of community and belonging through member-led activities & events.

FACULTY & SPEAKERS

Great thanks to our nearly 80 instructors and guest speakers for inspiring our members and community with their expertise and scholarship.

Faculty

Alexandra D. Amati
J B
Michael Baker
Amelia Barili
Marcia Lynn Bauman
Edwin Bernbaum
George Breslauer
Linda Carucci
Letha Ch'ien
Michael Chantler
Harry Chotiner
Anthony Clarvoe
Clifford Cranna
Beverly Crawford
Karen Davis
Linda Day
Pamela Rose
Pete Elman
Michael Fox
Barry Friedman
Marion Gerlind
Pamela Gleason
Deborah Gold
Michael Goldhaber
Caroline Goodwin
Bert Gordon
Jon Haveman
Enrique Lima
Jennifer Linderman
devorah major
Yoni Mayeri
Bryan Méndez
Michael Moran
Louise Nayer
Sara Orem
Abhijeet Paul
Sandra Phillips
Lanchih Po
Jane Sargus
Pierluigi Serraino
Elena Sheygal
Bill Smoot
Matthew Specter
Carlos Torres
Richie Unterberger
Kenneth Verosub
Stephanie Wells
Mina Witteman
Darren Zook

Speakers

Ken Alex
Tamim Ansary
Sandra Bass
John Battles
George Breslauer
Erwin Chemerinsky
Deirdre English
Amy Eva
Michael Fox
Robert Full
Jack Glaser
Deborah Gold
Yuriy Gorodnichenko
Steven Greenhouse
Ira Harkavy
Daniel Kammen
David Lindeman
Courtney Lyles
Brian Murphy
Zach Norris
Erica Bree Rosenblum
Abdi Soltani
Emerson Sykes
Robert Strand
Carlos Torres
Darren Zook



OLLI Team



Susan Hoffman
Director



Patricia Carvalho
Business & Operations Manager



Matt Shears
Curriculum Coordinator



Nancy Murr
Communications & Marketing Manager



Max Godino
Classroom & Facilities Coordinator



LaeCharles Lawrence Jr.
Classroom Coordinator



Rob Chew
Classroom Coordinator



Cheryl Brewster
Research Associate

Osher Lifelong Learning Institute
at the University of California, Berkeley

1995 University Avenue, Suite 365
Berkeley, CA 94704

olli.berkeley.edu (web)
berkeley_olli@berkeley.edu (email)
510.642.9934 (tel)

